

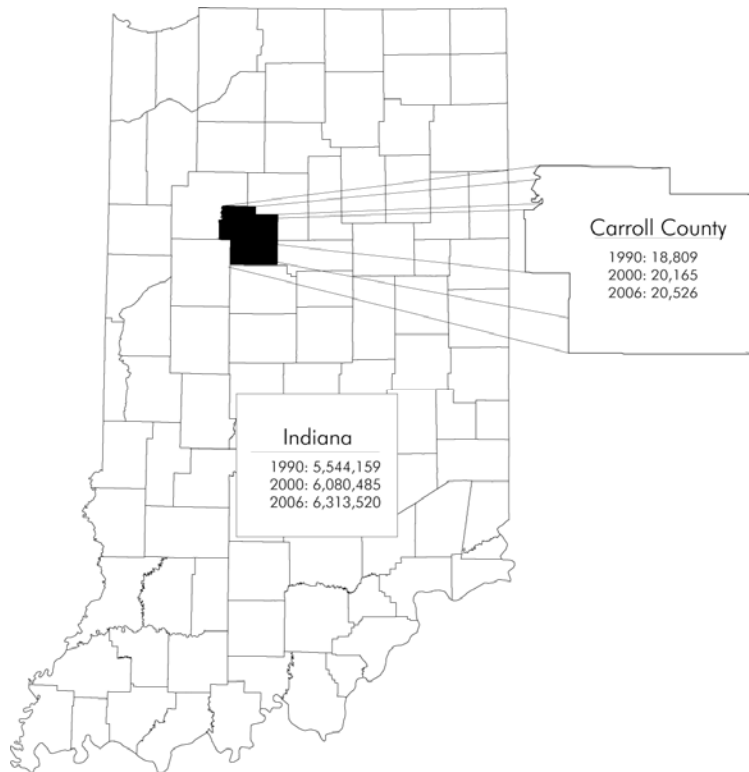
Appendix A

Demographics

Appendix A: Demographics

POPULATION

In 2000, Carroll County had a population of 20,165. Carroll County is surrounded by four counties with greater populations: Cass, Howard, Clinton, and Tippecanoe, and by White County which has a smaller population.

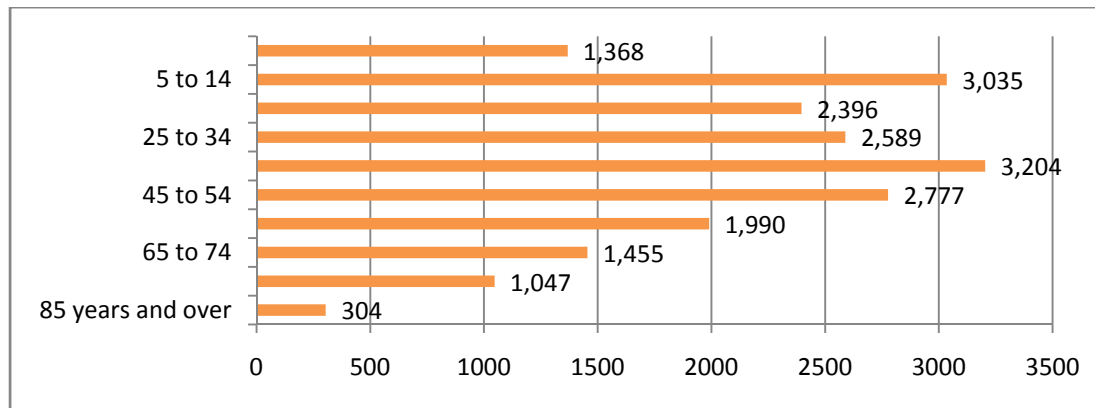


From 1990 to 2000, the population of Carroll County increased by 1,356 residents, which is a 7.2% increase. Howard and Cass counties grew at a somewhat slower rate than this (5.1% and 6.5%, respectively) while White and Clinton counties' growth rates were slightly higher (8.6% and 9.3%, respectively). Tippecanoe County grew by over 14% in the same ten year period and the state of Indiana's population growth rate was just under 10%.

Projections made by the Indiana Business Research Center estimated the 2010 population for Carroll County to be 20,614. This is an increase of slightly more than 2% growth relative to the 2000 population.

POPULATION DISTRIBUTION

The 2000 population distribution by age for Carroll County is shown in the chart above. The largest segment of the county's population is the 35 to 44 year old range with 3,204 persons. This segment of the population can be further split into the 35 to 39 year range with 1,549 individuals and the 40 to 44 year range with 1,655 individuals. The 5 to 14 year old range is the second largest with 3,035 persons. This segment also can be split with the 5 to 9 year old range with 1,486 persons and the 10 to 14 year range with 1,549 individuals.

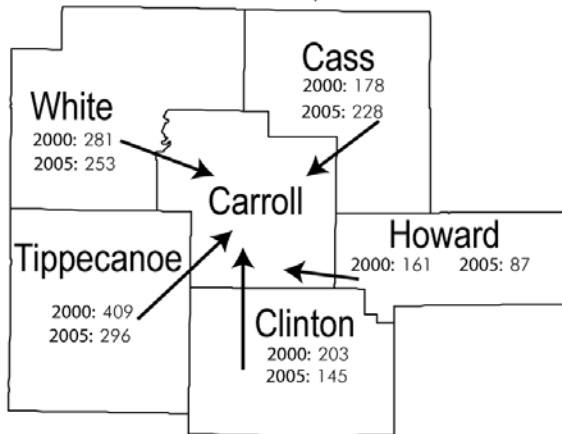


Sources: 1980-2000 U.S. Census and July 2005 Census estimates (www.census.gov) and Indiana Business Research Center, I.U. Kelley School of Business (www.stats.indiana.edu) dated April 12, 2007.

Appendix A: Demographics

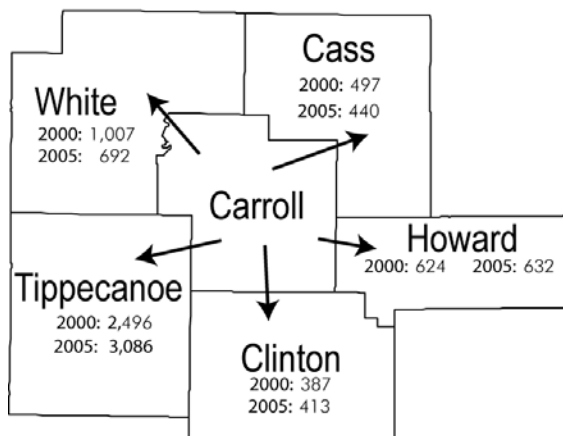
COMMUTING PATTERNS

Commute Patterns Into Carroll County, 2000 and 2005



The top illustration shows the commuting patterns of surrounding counties coming into Carroll County for employment. In 2000, 1,430 persons commuted into Carroll County to work, approximately 1,232 of these commuters came from adjacent counties. By 2005, the number of commuters coming into Carroll County to work dropped to 1,265 persons with about 1,009 of them from neighboring counties.

Commute Patterns Out of Carroll County, 2000 and 2005



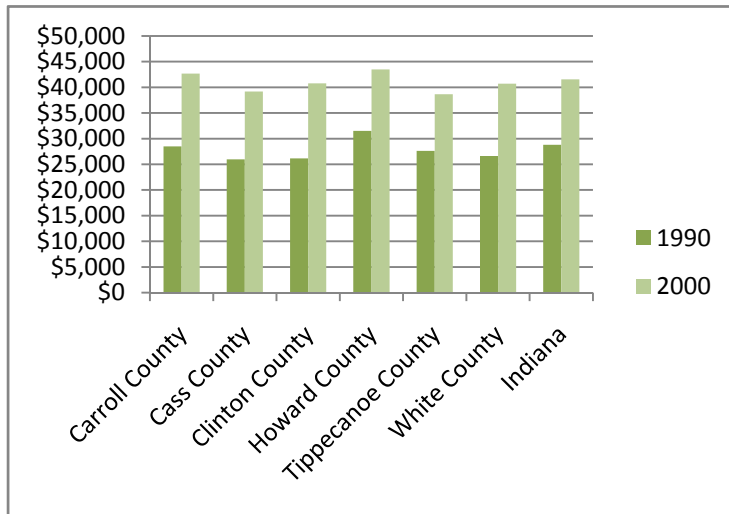
The lower illustration represents commuting patterns of Carroll County residents traveling to surrounding counties for employment. In 2000, a total of 5,336 individuals commuted out of the county for work with approximately 5,011 commuters going to adjacent counties. In 2005, the numbers had changed to approximately 5,669 residents traveling out of the county for work with 5,263 of these persons going to an adjacent county. Tippecanoe County attracts the largest segment of the commuting population (over 22%) with White, Howard, Cass and Clinton all attracting 5% or less of the commuters.

Source: Indiana Business Research Center, I.U. Kelley School of Business (www.stats.indiana.edu) dated April 12, 2007.

Appendix A: Demographics

MEDIAN HOUSEHOLD INCOME

The median household income divides the income distribution into two equal groups, one having income above the median, and the other having incomes below the median. In 2000, Carroll County had the second highest median household income (\$42,677) when compared to adjacent counties, with Howard County having a higher median household income and remaining adjacent counties having lower median household incomes. The State of Indiana's median household income was \$41,567.

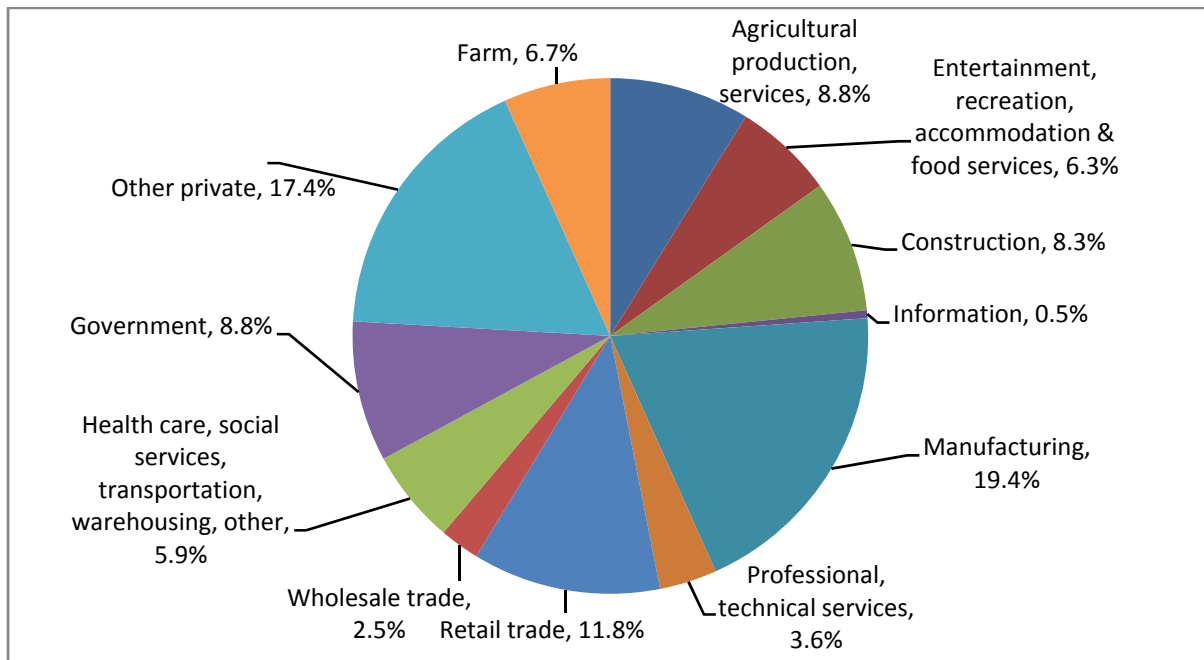


Carroll County's median household income increased by 49% from 1990 to 2000, an increase of \$14,171. This increase is relatively similar to adjacent counties, with Clinton, White, and Cass counties exceeding 50% increases and Howard and Tippecanoe counties closer to 40% increases. The State of Indiana's median household income showed an increase of 44% during the same time period.

Source: Indiana Business Research Center, I.U. Kelley School of Business (www.stats.indiana.edu) dated April 12, 2007.

EMPLOYMENT BY INDUSTRY

The graph below illustrates 2004 employment by industry, indicating that manufacturing and other private employment sectors represent the largest percentages of employers for Carroll County residents, representing 19.4 and 17.4 percent, respectively. The next largest sectors include approximately 11.8% in retail services, 8.8% in agricultural production and 8.3% in construction.

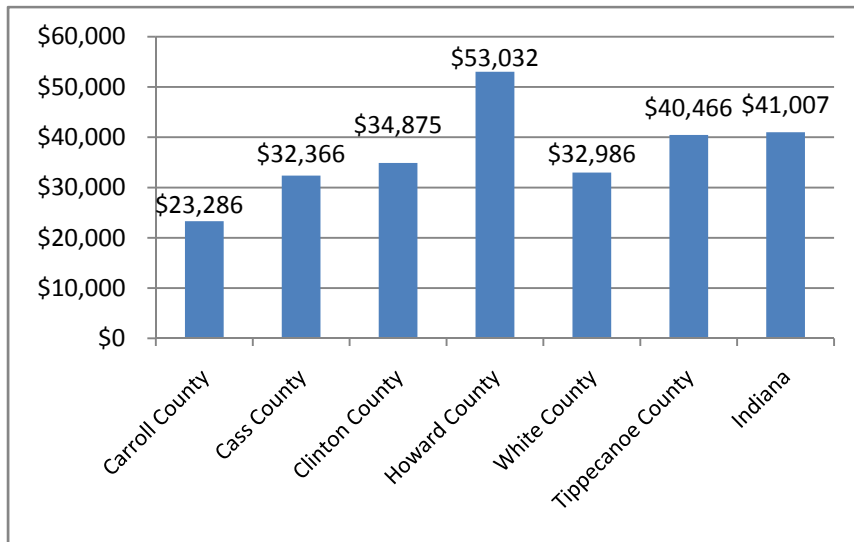


**Note: health care, social service and transportation warehousing categories' data are not available due to US Bureau of Economic Analysis non-disclosure requirements, this percentage therefore represents an estimate potentially included in these categories and others not reported. Source: Indiana Business Research Center, I.U. Kelley School of Business (www.stats.indiana.edu) dated April 12, 2007.

Appendix A: Demographics

ANNUAL WAGE

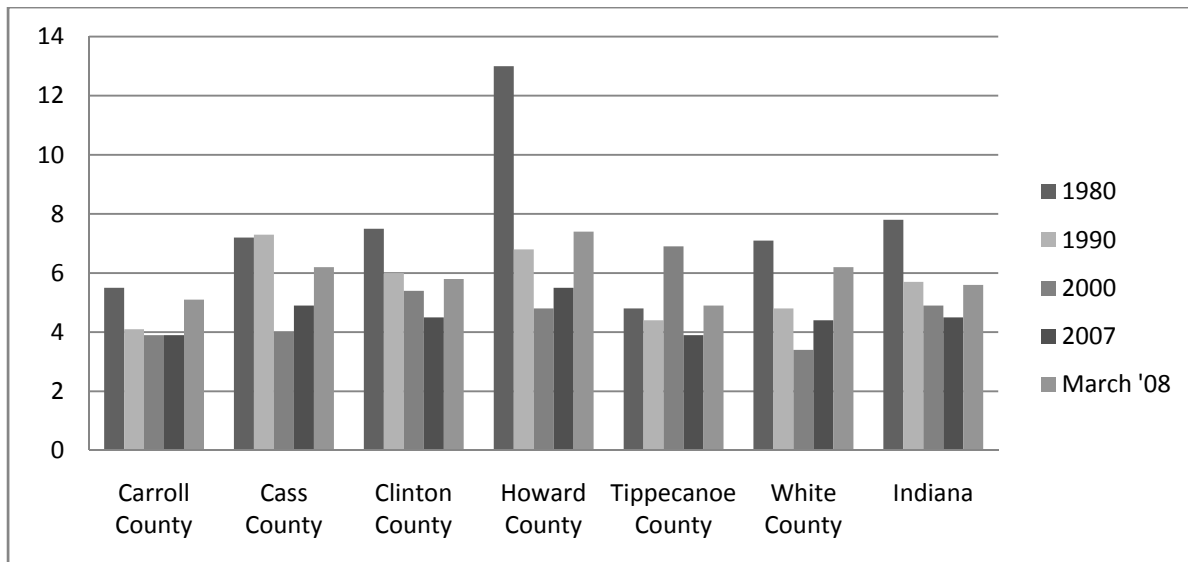
The average annual wage per job for Carroll County residents (2006 data) was \$23,286. The chart below indicates the data for surrounding counties and the state. Carroll County average wage per job is lower than all of the surrounding counties and the State of Indiana.



Source: Indiana Business Research Center, I.U. Kelley School of Business (www.stats.indiana.edu) U.S. Bureau of Economic Analysis data accessed May 1, 2008.

UNEMPLOYMENT RATE

Carroll County had an unemployment rate of 5.1% in March 2008. Of the surrounding counties and the State of Indiana, only Tippecanoe County, with a rate of 4.9% was slightly lower. As shown in the chart, the other counties ranged from 5.8 to 7.4% and the state rate was 5.6%.



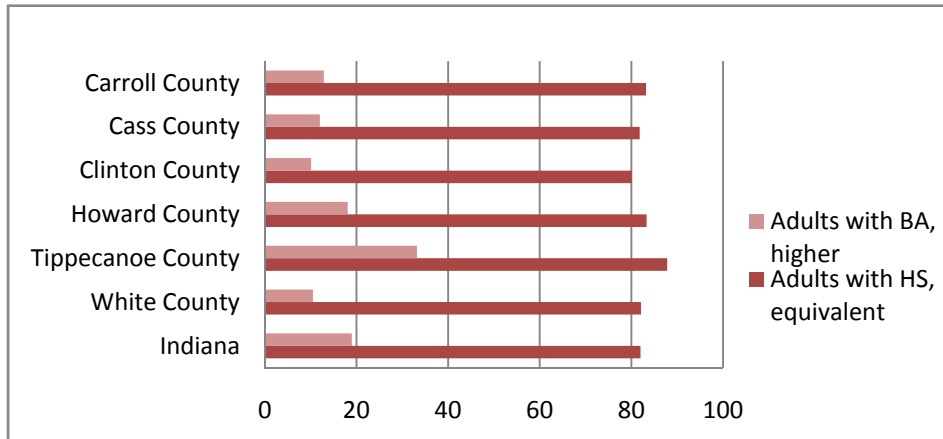
Source: Indiana Business Research Center, I.U. Kelley School of Business (www.stats.indiana.edu) Bureau of Labor Statistics, Indiana Department of Workforce Development data accessed May 1, 2008.

Appendix A: Demographics

EDUCATIONAL ATTAINMENT

The chart below presents information regarding the educational attainment status of residents in Carroll County, adjacent counties and the State of Indiana. Carroll County (83.2%) and adjacent counties have similar percentages of population over age 25 who have obtained a high school diploma, GED or equivalent, ranging from 80.1% in Clinton County to 87.8% in Tippecanoe County. The State of Indiana population over 25 with the same level of education is 82%. Greater differences are notable when considering adults with a bachelors degree or higher. Carroll County (12.9%) is generally in a lower range relative to Tippecanoe County (33.2%), the State of Indiana (19%) and Howard County (18.1%). Cass, Clinton, and White counties all have slightly

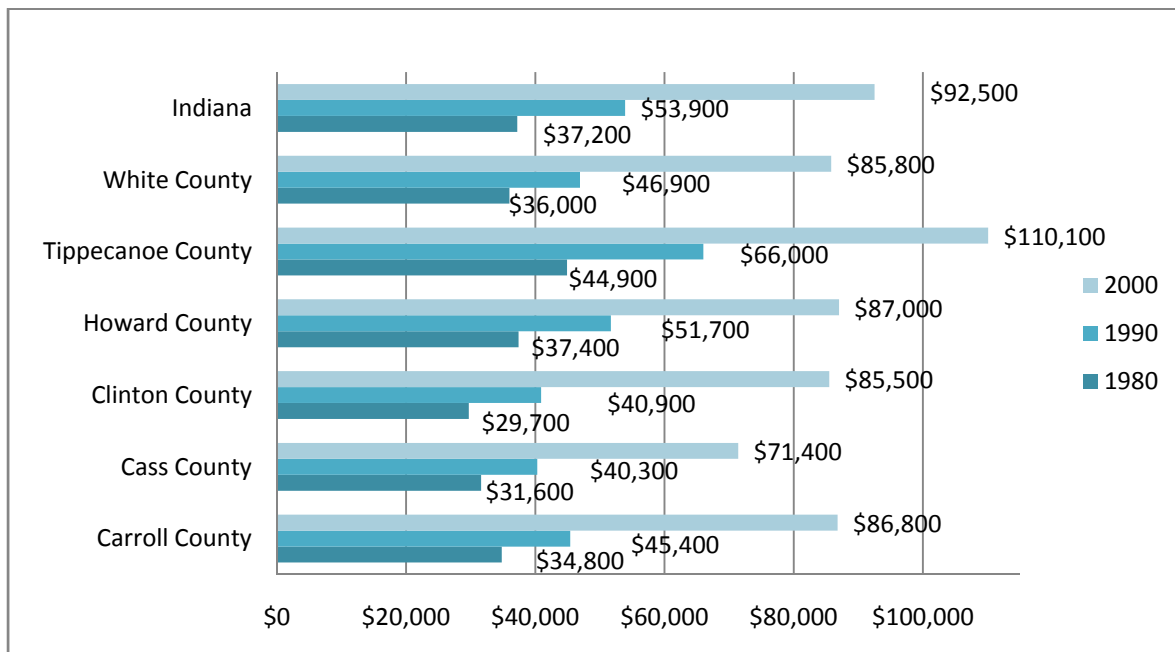
lower rates than Carroll County.



Source: Indiana Business Research Center, I.U. Kelley School of Business (www.stats.indiana.edu) Indiana Department of Education and U.S. Census Bureau data accessed May 1, 2008.

MEDIAN HOME VALUE

The median home value for Carroll County was \$86,600 in 2000. This indicates that half of the homes in Carroll County were valued at more than \$86,600 and half were valued at less. White and Clinton counties both had slightly lower median home values while the remaining surrounding counties and the State of Indiana had higher median home values.



Source: Indiana Business Research Center, I.U. Kelley School of Business (www.stats.indiana.edu) data accessed May 1, 2008.